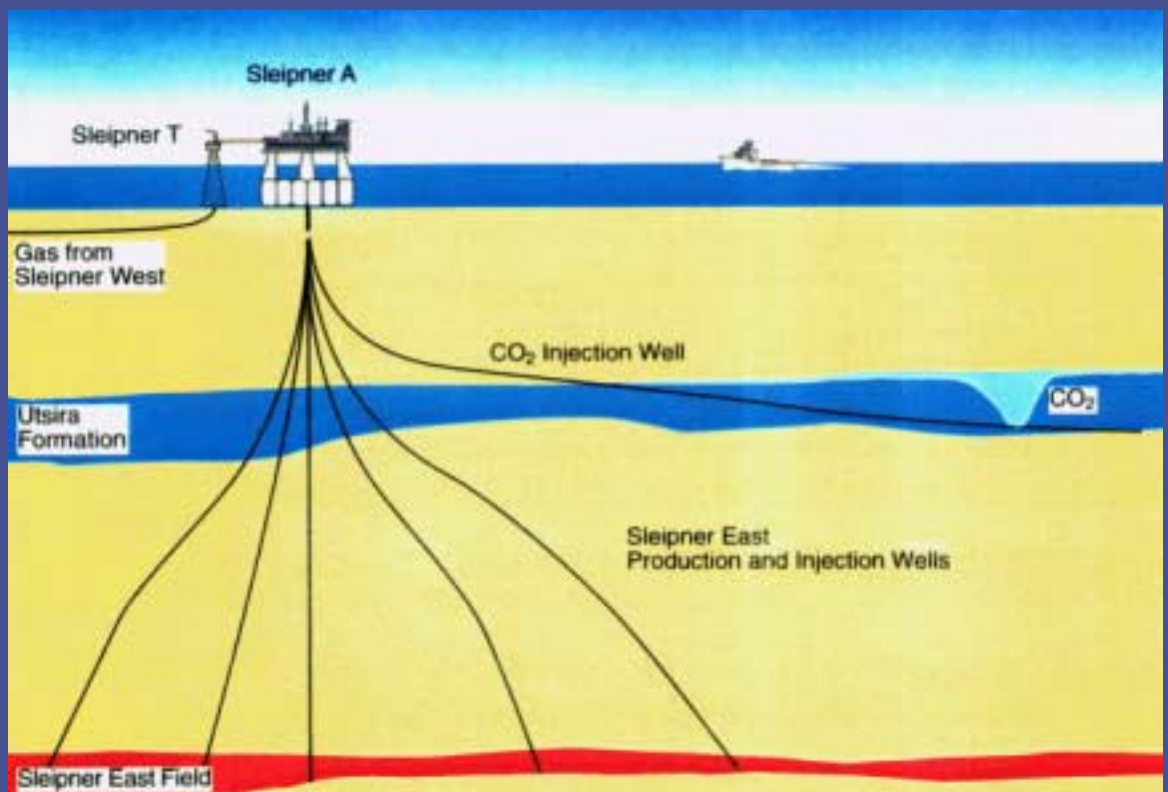




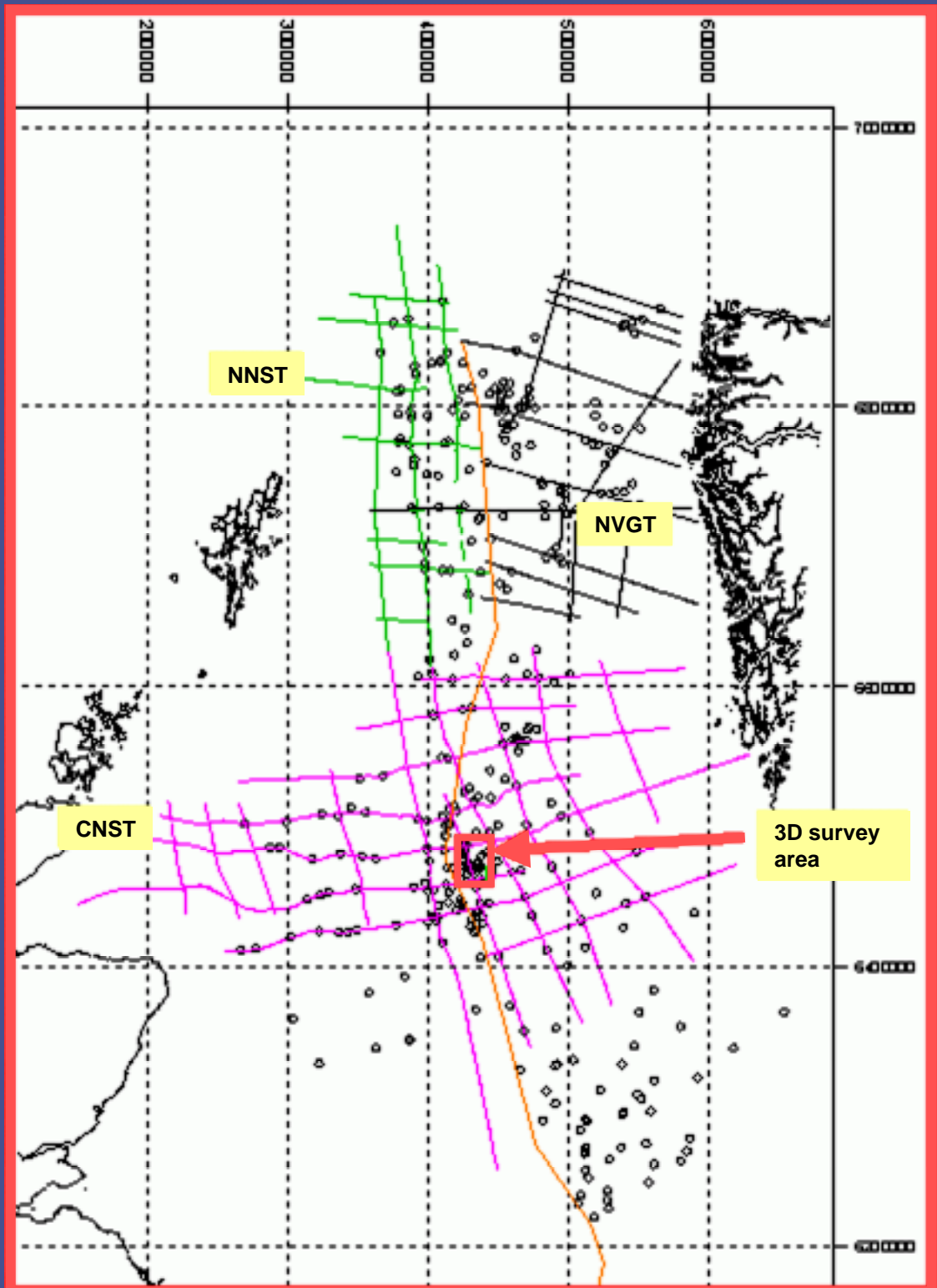
CO₂ injection scheme



- Injection started in October 1996
- Approximately 2.2 million tons of CO₂ have been injected until October 1999

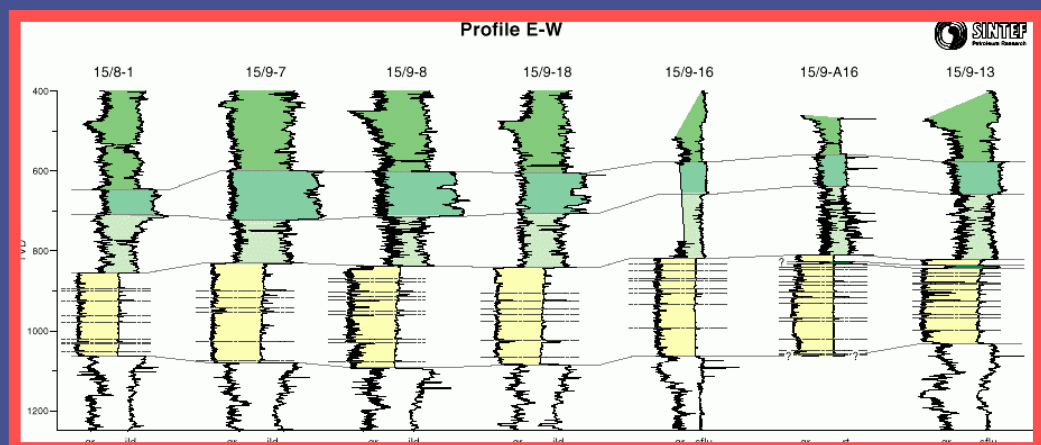
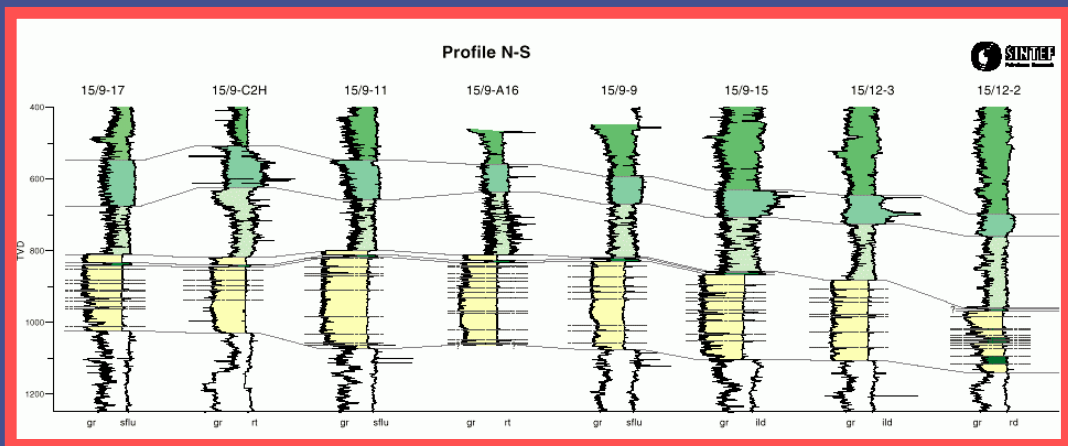
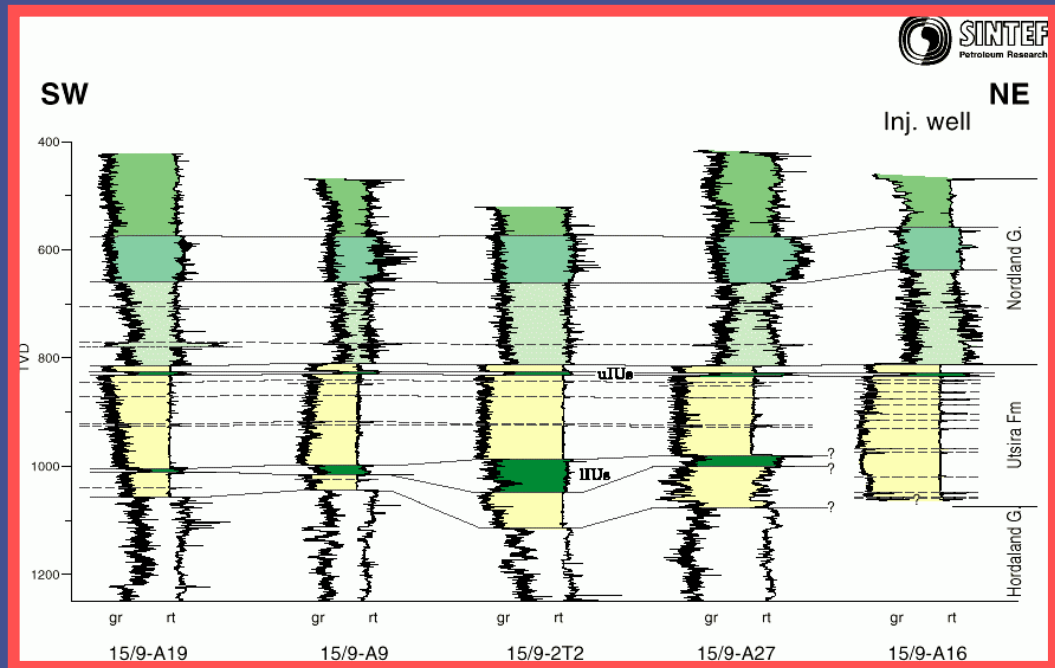


Sleipner area





Well correlation (SINTEF)

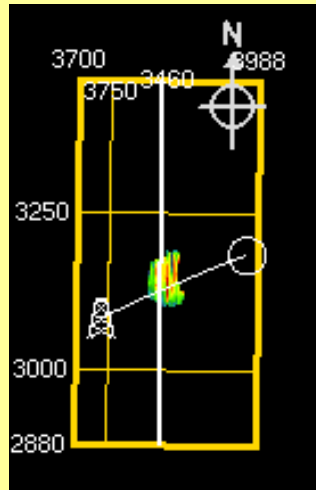




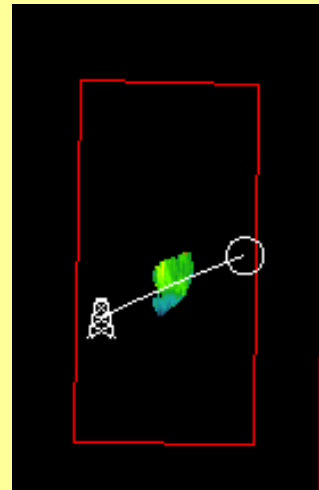
Shales capturing CO₂

**Outline survey
(3.6 x 7.25 km)**

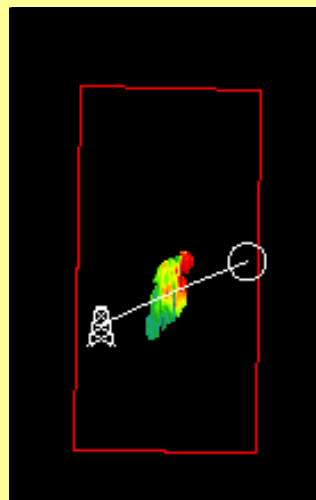
Shale 4



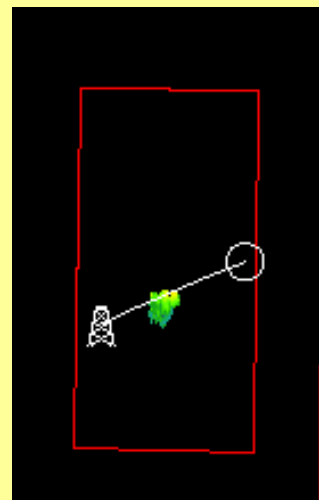
Shale 3



Shale 2

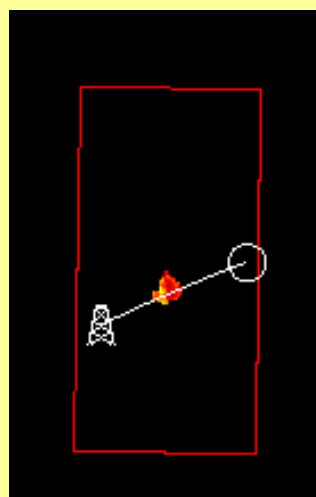


Shale 1



**Injection well
15/9-A16**

Top Utsira



Top wedge

